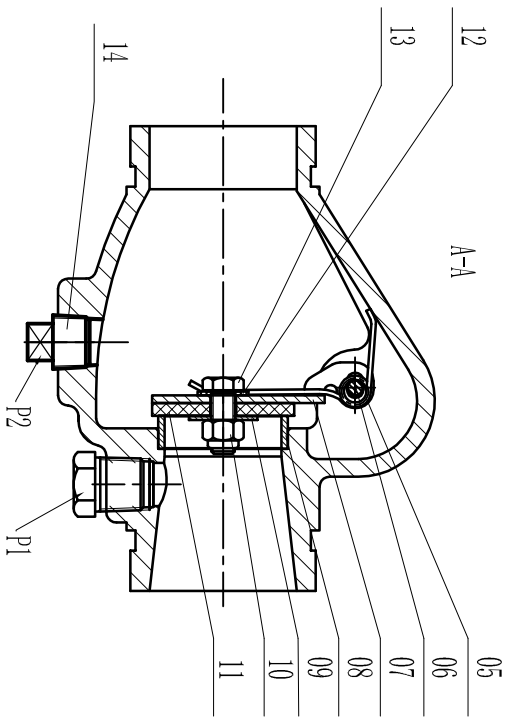
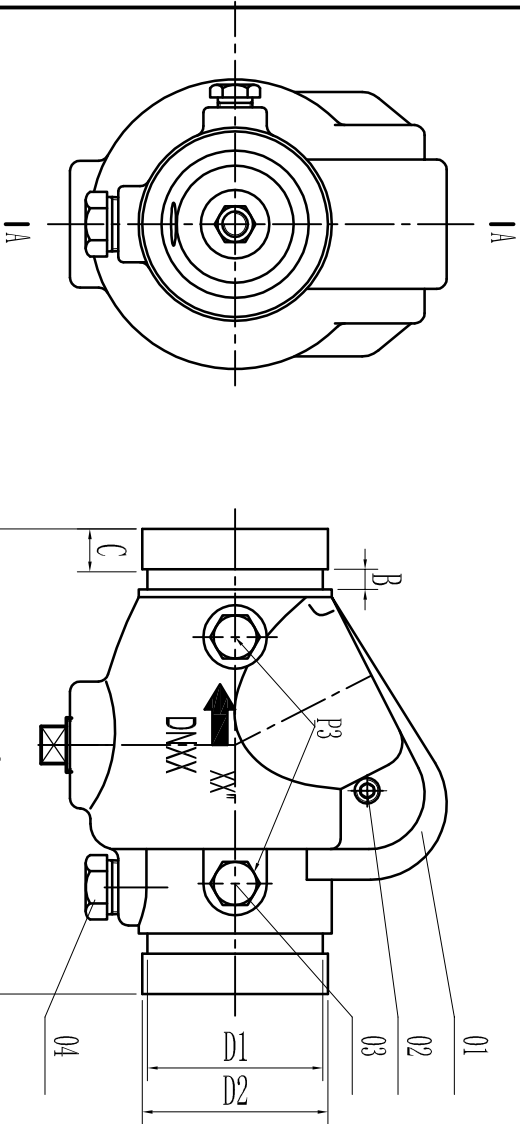


SIZE	ITEM	L	D1	D2	B	C	P1	P2	P3
2"	169	57.15	60.3	7.95	15.88	Re/2-14	Re/2-14	Re/1-11	Re/1-11
2.5"	181	69.09	73	7.95	15.88	Re/2-14	Re/2-14	Re/1-11	Re/1-11
3"	198	84.94	88.9	7.95	15.88	Re/2-14	Re/2-14	Re/1-11	Re/1-11
4"	214	110.08	114.3	9.53	15.88	Re/2-14	Re/2-14	Re/1-11	Re/1-11
5"	248	135.48	139.7	9.53	15.88	Re/2-14	Re/2-14	Re/1-11	Re/1-11
6"	270	160.08	165.1	9.53	15.88	Re/2-14	Re/2-14	Re/1-11	Re/1-11
8"	325	214.4	219.1	11.13	19.05	Re/2-14	Re/2-14	Re/1-11	Re/1-11
10"	457	268.3	273	12.7	19.05	Re/2-14	Re/2-14	Re/1-11	Re/1-11
12"	535	318.3	323.9	12.7	19.05	Re/2-14	Re/2-14	Re/1-11	Re/1-11



TECHNICAL SPECIFICATION
1. GROOVE STANDARD: METRIC ORAWMA C606;
2. NOMINAL PRESSURE: 350PSI, 300PSI, 250PSI, 200PSI, 175PSI OR PN16;
3. EXISTENCE OF TAPPED HOLES P1, P2 AND P3 UPON CLIENTS REQUEST.

14	Plug	1	1045 .ASTM A29	
13	Bolt	1	S.S.304, ASTM A276	
12	Gasket	1	EPDM, ASTM D2000	
11	Facing Seal	1	EPDM, ASTM D2000	
10	Locknut	1	S.S.304, ASTM A276	
9	Clamping Ring	1	S.S.304, ASTM A276	
8	Seat	1	C98400, ASTM B148	
7	Clapper	1	S.S.304, ASTM A276	
6	Hinge Pin	1	S.S.304, ASTM A276 OR D1,ASTM A536 Grade 65-45-12	
5	Spring	1	S.S.304, ASTM A276	
4	Plug	1	1045 .ASTM A29	
3	Plug	2	1045 .ASTM A29	
2	Bolt	2	1045 .ASTM A29	
1	Valve Body	1	D1,ASTM A536 Grade 65-45-12	

TOLERANCE / TOLERANZE		INDICE		NATURA DELLA MODIFICA		DATA	
DIMENSIONI	ANGOLI	PROFILATI	ROTTURE				
UNITS - ISO 27168 mm	ISO 27168 mm	DENOMINAZIONE / DENOMINATION		ART. 112 VALVOLE DI RITRORNO A CLAPET CON USCITE SCAMBIATE			
FORI/ HOLES H13	ALBERI/ SHAFTS H13	SCALA / SCALE MATERIALE / MATERIAL		1:3 SU (A3)			
DUREZZA / HARDNESS		RESISTENZA / STRENGTH		TRATTAMENTO/TREATMENT		CODICE / CODE	
VM		15/11/19		VERNICATURA dis-ART112		Rev.0	



A meno di legge e senza bias, le designazioni e le quotazioni sono fornite secondo le norme vigenti in Italia.